



CorePro LED PLC 4P



CorePro LED PLC 5.5W 840 4P G24q-1

The CorePro LED PLC 4P integrates a LED light source into a traditional fluorescent form factor. This product is the ideal solution for uplamping in general lighting applications: it meets basic lighting requirements, offers significant energy savings, and is environmentally friendly.

Product data

| General Information | |
|---------------------------------------|--------------------|
| Cap-Base | G24q-1 ROT |
| Nominal lifetime | 30,000 hour(s) |
| Switching Cycle | 200,000 |
| Lighting Technology | LED |
| Flux measurement reference | Sphere |
| Light Technical | |
| Color Code | 840 [CCT of 4000K] |
| Beam Angle (Nom) | 120 degree(s) |
| Luminous Flux | 660 lm |
| Color Designation | Cool White (CW) |
| Correlated Color Temperature (Nom) | 4000 K |
| Luminous Efficacy (rated) (Nom) | 120 lm/W |
| Color Consistency | <6 |
| Color rendering index (CRI) | 82 |
| LLMF At End Of Nominal Lifetime (Nom) | 70 % |
| Operating and Electrical | |
| Input Frequency | 50 to 60 Hz |
| Power Consumption | 5.5 W |
| Lamp Current (Nom) | 30 mA |
| Starting Time (Nom) | 0.5 s |

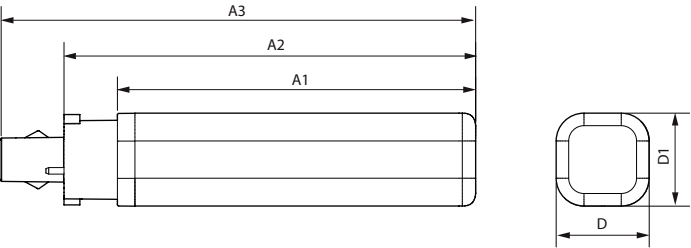
| Warm-up time to 60% light | 0.5 s |
|--|-----------|
| Power Factor (Fraction) | 0.9 |
| Voltage (Nom) | 220-240 V |
| Ballast Compatibility | HF/Mains |
| LED alternative to fluorescent lamp power | 13 W |
| Inrush current at mains | - |
| Max. lamp no. on MCB B type 10A - Mains | - |
| Max. lamp no. on MCB B type 10A – EM ballast without Compensation Capacitor. | - |
| Max. lamp no. on MCB B type 16A – EM ballast with Compensation Capacitor. | - |
| Max. lamp no. on MCB B type 16A - Mains | - |
| Max. lamp no. on MCB B type 16A – EM ballast without Compensation Capacitor. | - |
| Max. lamp no. on MCB B type 16A – EM ballast with Compensation Capacitor. | - |
| Temperature | |
| T-Case Maximum (Nom) | 70 °C |
| Controls and Dimming | |
| Dimmable | No |

CorePro LED PLC 4P

| | |
|-------------------------------|-----------------|
| Mechanical and Housing | |
| Bulb Finish | Frosted |
| Bulb Material | Plastic |
| Product Length | 128 mm |
| Bulb Shape | PL-C |
| Net Weight (Piece) | 0.100 kg |
| Approval and Application | |
| Energy Efficiency Class | E |
| Energy Saving Product | Yes |
| Approval Marks | RoHS compliance |
| Energy Consumption kWh/1000 h | 6 kWh |
| EPREL Registration Number | 1945439 |
| CE mark | Yes |
| EU RoHS compliant | Yes |
| Ambient temperature range | -20 to +45 °C |

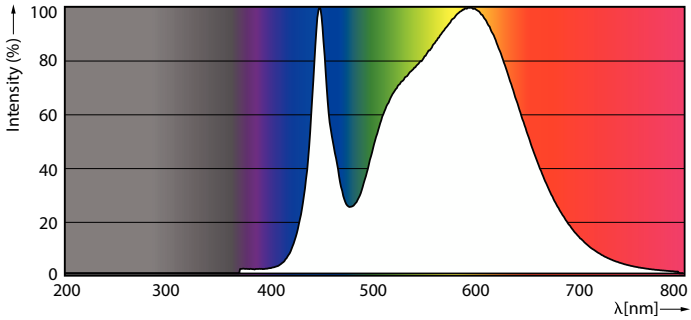
| | |
|-------------------------------------|------------------------------------|
| Application Conditions | |
| can it be used in closed luminaires | Yes |
| Product Data | |
| Order product name | CorePro LED PLC 5.5W 840 4P G24q-1 |
| Full product name | CorePro LED PLC 5.5W 840 4P G24q-1 |
| Full product code | 872016929043300 |
| Order code | 929003757702 |
| Material Nr. (12NC) | 929003757702 |
| Numerator - Quantity Per Pack | 1 |
| EAN/UPC - Product/Case | 8720169290433 |
| Numerator - Packs per outer box | 10 |
| EAN/UPC - Case | 8720169290440 |

Dimensional drawing

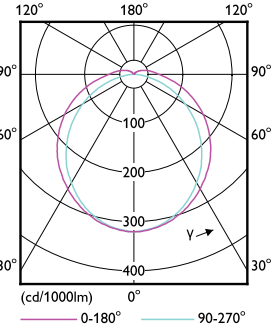


| Product | D1 | D2 | A1 | A2 | A3 |
|------------------------------------|-------|-------|--------|--------|--------|
| CorePro LED PLC 5.5W 840 4P G24q-1 | 34 mm | 34 mm | 109 mm | 128 mm | 144 mm |

Photometric data

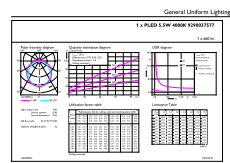


Spectral Power Distribution Colour - CorePro LED PLC 5.5W 840 4P G24q-1



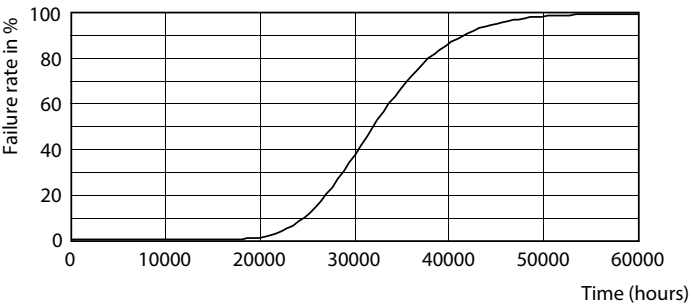
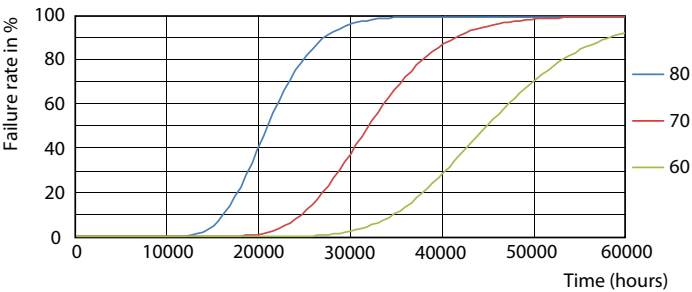
Light Distribution Diagram - CorePro LED PLC 5.5W 840 4P G24q-1

Photometric data

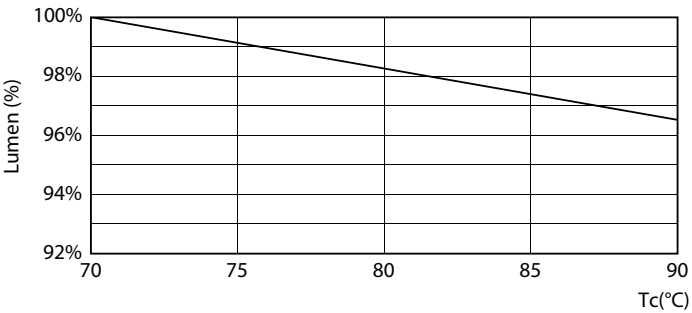


General uniform lighting - CorePro LED PLC 5.5W 840 4P G24q-1

Lifetime

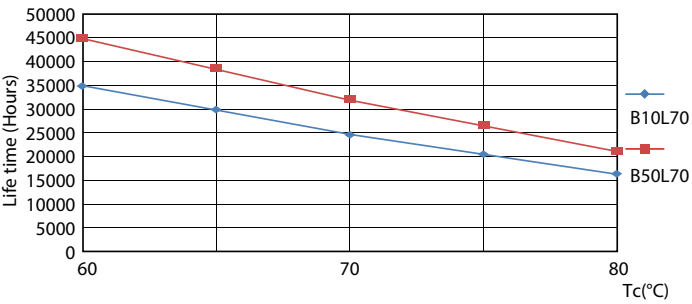


FailureRate



Lumen Maintenance Diagram - CorePro LED PLC 5.5W 840 4P G24q-1

Life Expectancy Diagram



LifetimeVsTc

CorePro LED PLC 4P

Lifetime



Lumen Maintenance Diagram - CorePro LED PLC 5.5W 840 4P G24q-1

