



# MASTER LEDtube InstantFit HF T5



## MAS LEDtube HF 600mm HO 10.5W 865 T5

The Philips MASTER LEDtube integrates a LED light source into a traditional fluorescent form factor. Its unique design creates a perfectly uniform visual appearance, which cannot be distinguished from traditional fluorescent. These T5 lighting tubes are the right choice for absolute performance and are designed to stand up to everyday conditions. Unparalleled savings thanks to low energy consumption and an exceptionally long lifetime make these T5 LED tubes the choice for every demanding application.

### Product data

General Information		Photobiological safety according to EN 62471	
Cap-Base	G5	RG0	
Nominal lifetime	60,000 hour(s)		
Switching Cycle	50,000		
Lighting Technology	LED		
Flux measurement reference	Sphere		
Light Technical		Operating and Electrical	
Color Code	865 [CCT of 6500K]	Line Frequency	10K to 120K Hz
Beam Angle (Nom)	200 degree(s)	Input Frequency	10K to 120K Hz
Luminous Flux	1,600 lm	Power Consumption	10.5 W
Color Designation	Cool Daylight	Lamp Current (Max)	350 mA
Correlated Color Temperature (Nom)	6500 K	Lamp Current (Min)	80 mA
Luminous Efficacy (rated) (Nom)	152 lm/W	Starting Time (Nom)	0.5 s
Color Consistency	<6	Warm-up time to 60% light	0.5 s
Color rendering index (CRI)	80	Power Factor (Fraction)	0.9
LLMF At End Of Nominal Lifetime (Nom)	70 %	Voltage (Nom)	30-120 V
		Ballast Compatibility	HF
		LED alternative to fluorescent lamp power	24 W
		Inrush current at mains	-
		Max. lamp no. on MCB B type 10A - Mains	-
		Max. lamp no. on MCB B type 10A – EM ballast without Compensation Capacitor.	-

MASTER LEDtube InstantFit HF T5

Max. lamp no. on MCB B type 10A – EM ballast with Compensation Capacitor.	-
Max. lamp no. on MCB B type 16A – Mains	-
Max. lamp no. on MCB B type 16A – EM ballast without Compensation Capacitor.	-
Max. lamp no. on MCB B type 16A – EM ballast with Compensation Capacitor.	-

Temperature

T-Case Maximum (Nom)	55 °C
----------------------	-------

Controls and Dimming

Dimmable	Yes - Check ballast compatibility
----------	-----------------------------------

Mechanical and Housing

Bulb Finish	Frosted
Bulb Material	Glass
Product Length	600 mm
Bulb Shape	T5
Net Weight (Piece)	0.085 kg

Approval and Application

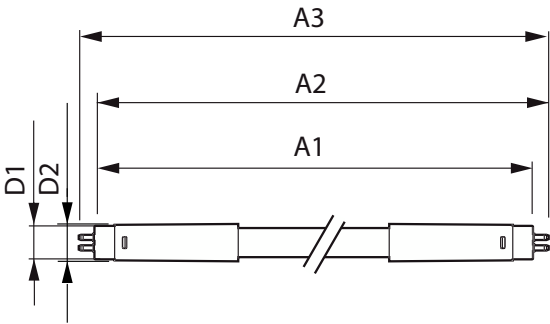
Energy Efficiency Class	D
-------------------------	---

Energy Saving Product	Yes
Approval Marks	RoHS compliance KEMA Keur certificate
Energy Consumption kWh/1000 h	11 kWh
EPREL Registration Number	1407659
CE mark	Yes
EU RoHS compliant	Yes
Ambient temperature range	-20 °C to 45 °C

Product Data

Order product name	MAS LEDtube HF 600mm HO 10.5W 865 T5
Full product name	MAS LEDtube HF 600mm HO 10.5W 865 T5
Full product code	872016916311900
Order code	929003596402
Material Nr. (12NC)	929003596402
Numerator - Quantity Per Pack	1
EAN/UPC - Product/Case	8720169163119
Numerator - Packs per outer box	10
EAN/UPC - Case	8720169163126

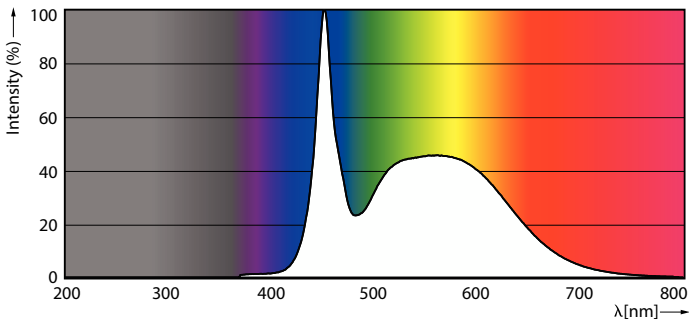
Dimensional drawing



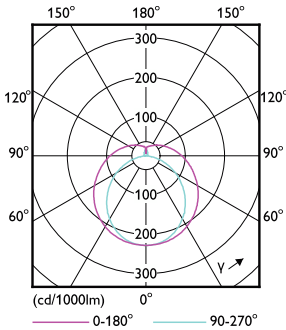
Product	D1	D2	A1	A2	A3
MAS LEDtube HF 600mm HO 10.5W 865 T5	15.5 mm	16/19 mm	549 mm	556 mm	563 mm

MASTER LEDtube InstantFit HF T5

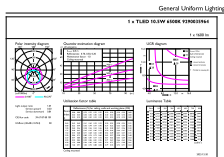
Photometric data



Spectral Power Distribution Colour - MAS LEDtube HF 600mm HO 10.5W 865 T5

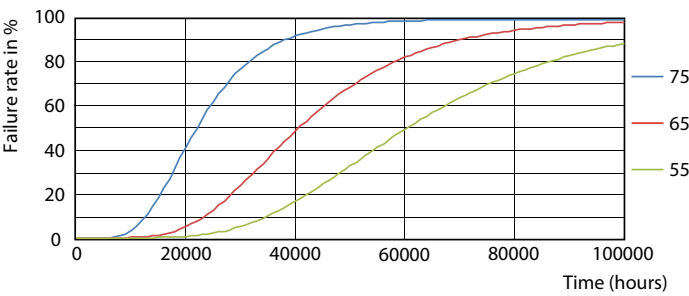


Light Distribution Diagram - MAS LEDtube HF 600mm HO 10.5W 865 T5

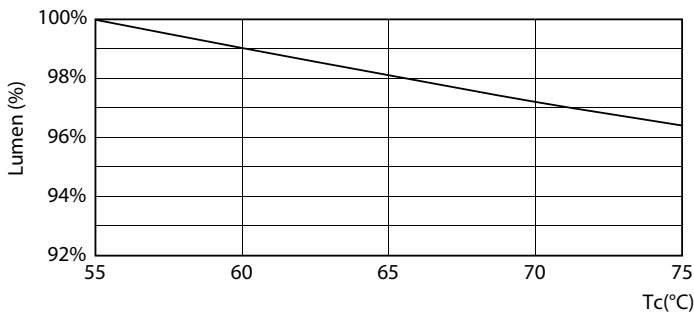


General uniform lighting - MAS LEDtube HF 600mm HO 10.5W 865 T5

Lifetime



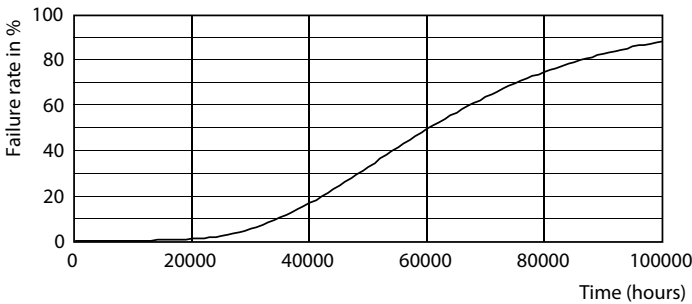
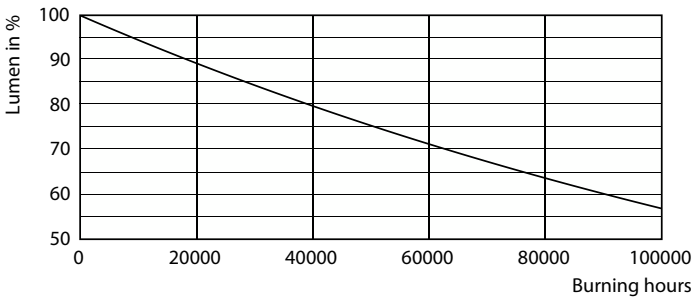
FailureRate



Lumen Maintenance Diagram - MAS LEDtube HF 600mm HO 10.5W 865 T5

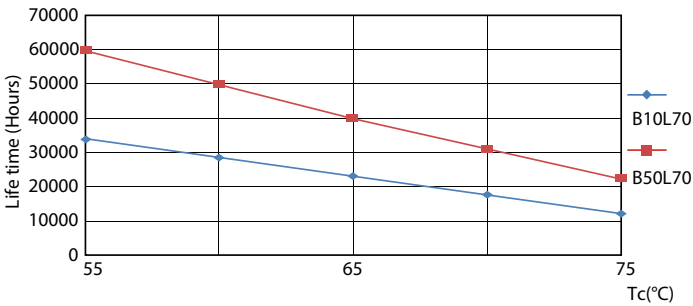
MASTER LEDtube InstantFit HF T5

Lifetime



Lumen Maintenance Diagram - MAS LEDtube HF 600mm HO 10.5W 865 T5

Life Expectancy Diagram



LifetimeVsTc

